

Bond Markets Don't Point To a US Recession They Point to Longer-Term Macro Risks

Oct 2019 | Kurt Winkelmann, Raghu Suryanayaranan, Ferenc Szalai

Navega Strategies LLC.
www.navegastrategies.com

Navega Strategies LLC is not registered with the Securities and Exchange Commission or any state securities regulator, and instead relies on exemptions from registration available under the federal and state securities laws. Therefore, you will not be afforded the protections of the provisions of those laws and related regulations.

Additional disclosures are found on the last page.



Why This Matters?

The inversion of the US treasury yield curve (long interest rates falling below short rates) has raised concerns of imminent large scale recession in the US and globally. According to our models, bond markets are not pricing in a recession, but the continuation of low long-term trend growth, driven by low growth in total factor productivity (TFP) and the labor force. For investors holding bonds in their portfolio, stagnant low growth also implies a prolonged period of low bond yields relative to history.

Who Should Read This Paper?

The issues in this paper are important for managing the long-term risk of public and private assets, and should be of interest to the risk and investment strategists, and asset allocators.



Introduction

Recent financial markets commentary has focused on the potential for a large scale recession in the US (and globally). Commentators have cited as evidence the inversion of the yield curve and the ambiguity of recent central bank announcements.

In our view, the hysteria surrounding an imminent, recession in the US is misguided. First, the recent in-

version of the US yield curve, driven by a decline in *long rates*, is consistent with markets pricing in a continuation of low *long-term trend growth*. Second, major macroeconomic indicators point to resilient growth in the *short term*. Rather than focus on the short term, our models suggest that investors should focus on the drivers of long-term growth.

The US Yield Curve Has Inverted

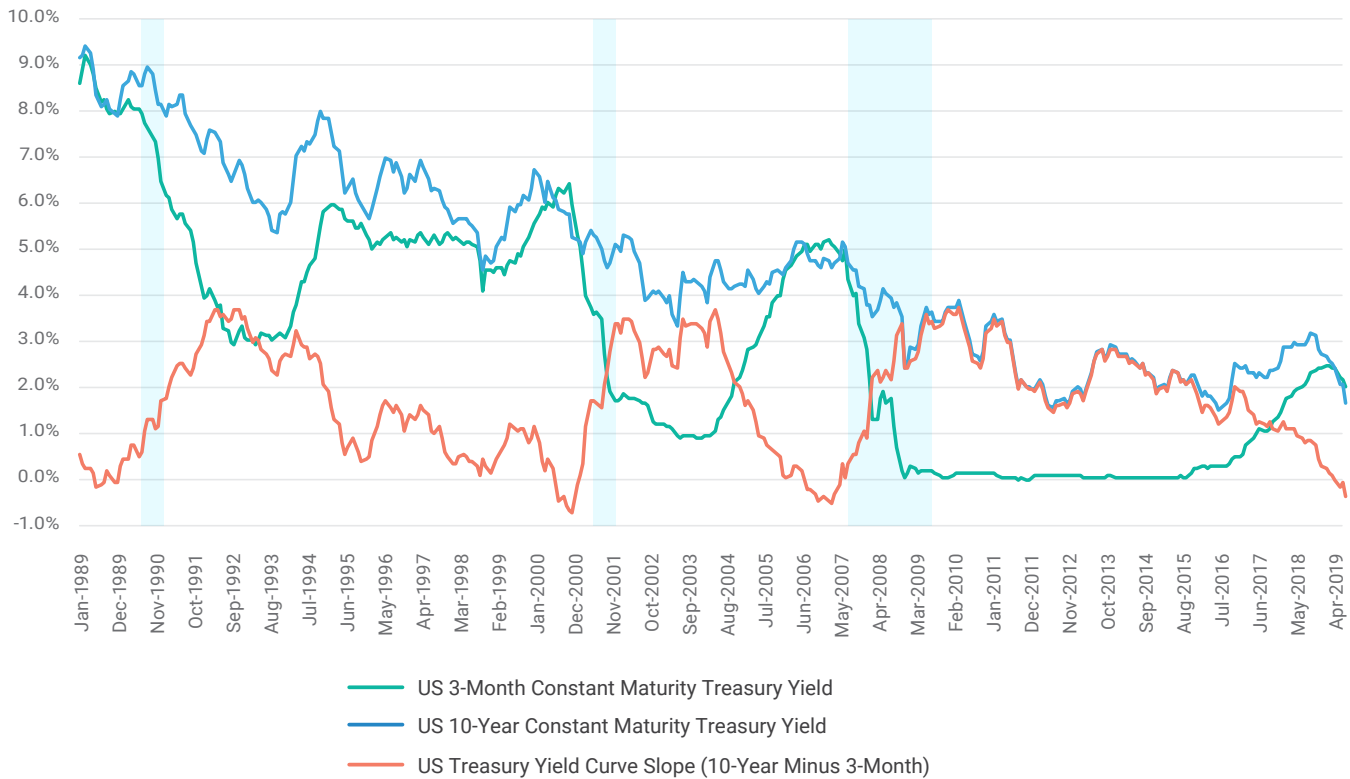
Exhibit 1 shows the evolution of the 10-year and 3-month US treasury yields along with their differences, the so-called “slope” of the US treasury yield curve. Since early June, the slope has turned negative, with the 10-year rate going below the 3-month rate, thus “inverting” the yield curve.

The inversion has raised investors’ recession wor-

ries because there is a tight connection between interest rates and economic activity. In fact, the Exhibit shows that the last three global recessions, including 2008, have all been preceded by an inversion. But this time is different. Bond markets signal a much bigger risk for investors: the risk of prolonged period of low real economic growth. Here is why.

Exhibit 1 - US Yield Curve Inversion Driven by Decline in Long Rates

Yield and Slope (Annualized, %)



SOURCE: NAVEGA STRATEGIES LLC RESEARCH

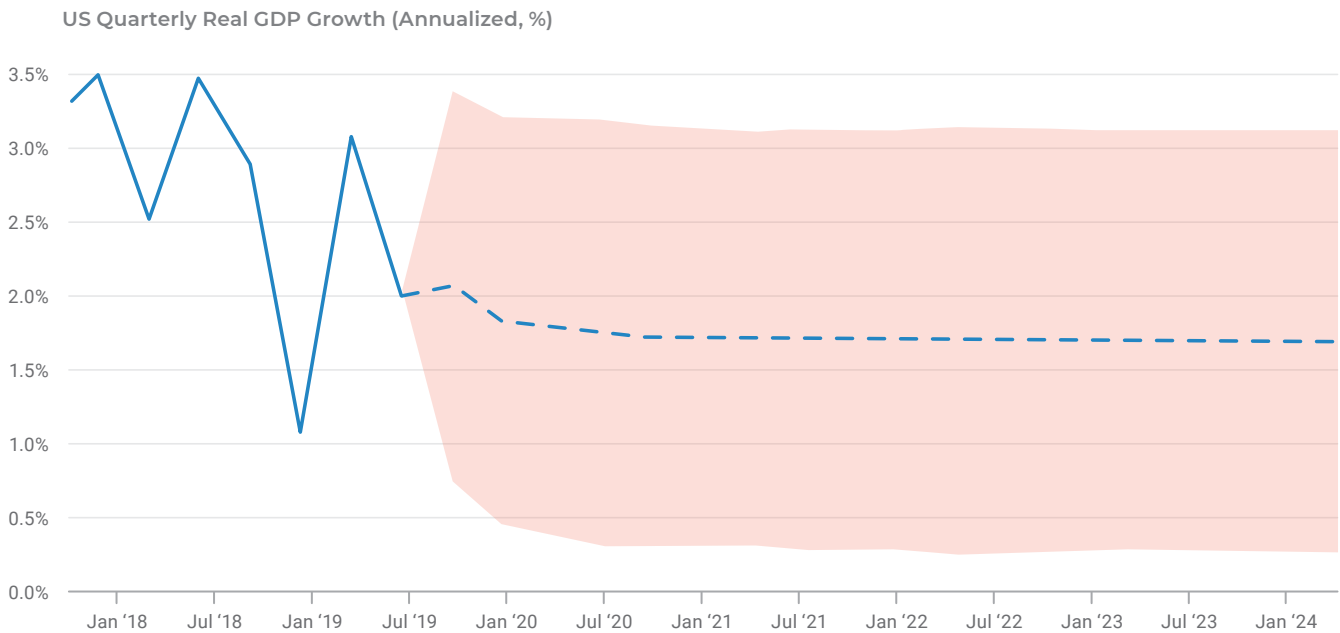
Small Risk of Recession in the Short Term

The three previous inversions were primarily driven by an increase in short rates: monetary policy was tightened to prevent overheating relative to average real growth of around 3%. In fact, as shown in Exhibit 2, there is little sign of overactivity in the US economy in the last 2 years. Looking ahead, the Navega model baseline forecasts growth of about 1.8% (dotted line) for the next 12 months, supported by improvements in baseline and wages¹. If we judge “likelihood of recession”

by the confidence bands around the baseline forecasts, we can see that the Navega model assigns a very low probability (4%) to a recession in the next 12 months. It does not, however, rule out the possibility of low(er) but positive real growth.

¹ Our forecasts are model and data driven.

Exhibit 2 - Low Recession Risk According to Navega Model Baseline Scenario



SOURCE: NAVEGA STRATEGIES LLC RESEARCH

Big Risk of Prolonged Period of Low Trend Growth

By contrast, this episode of yield curve inversion has been driven mostly by a decline in *long rates*: long rates usually reflect trends in real growth. Indeed, the more interesting point in Exhibit 2 is the long-term path for the baseline forecast. According to our model, real growth should average around 1.7% for the next five years, a remarkably low trend compared to its 3% average pre-2008 global financial crisis.

Importantly, this baseline forecast of long-term real growth is *also what is priced into real (inflation-adjust-*

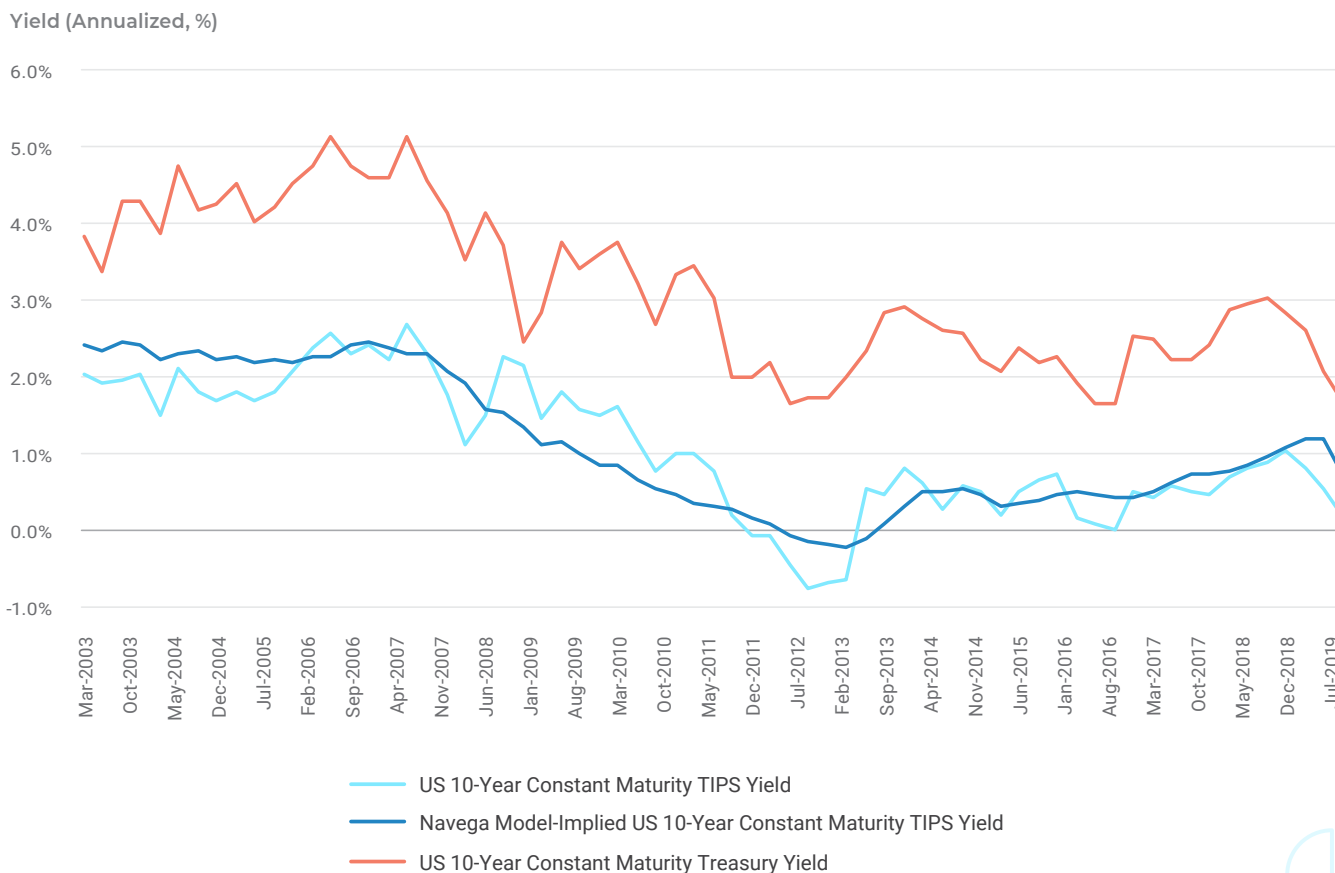
ed) and nominal bond yields, as illustrated in Exhibit 3. The exhibit shows that nominal and real yields have been persistently low for the past decade, and their difference, reflecting market inflation expectations, has remained stable at around 2%. The Exhibit also shows that observed real yields are well aligned with yields implied by our macro-based asset pricing model². Thus,

² This model explicitly incorporates long-term expectations of real economic growth.

according to our models, the recent decline in long rates do not signal an imminent recession. Instead, bond

markets are pricing in a prolonged period of low(er) real growth.

Exhibit 3 - Long Rates Point To Low Long-Term Real Growth

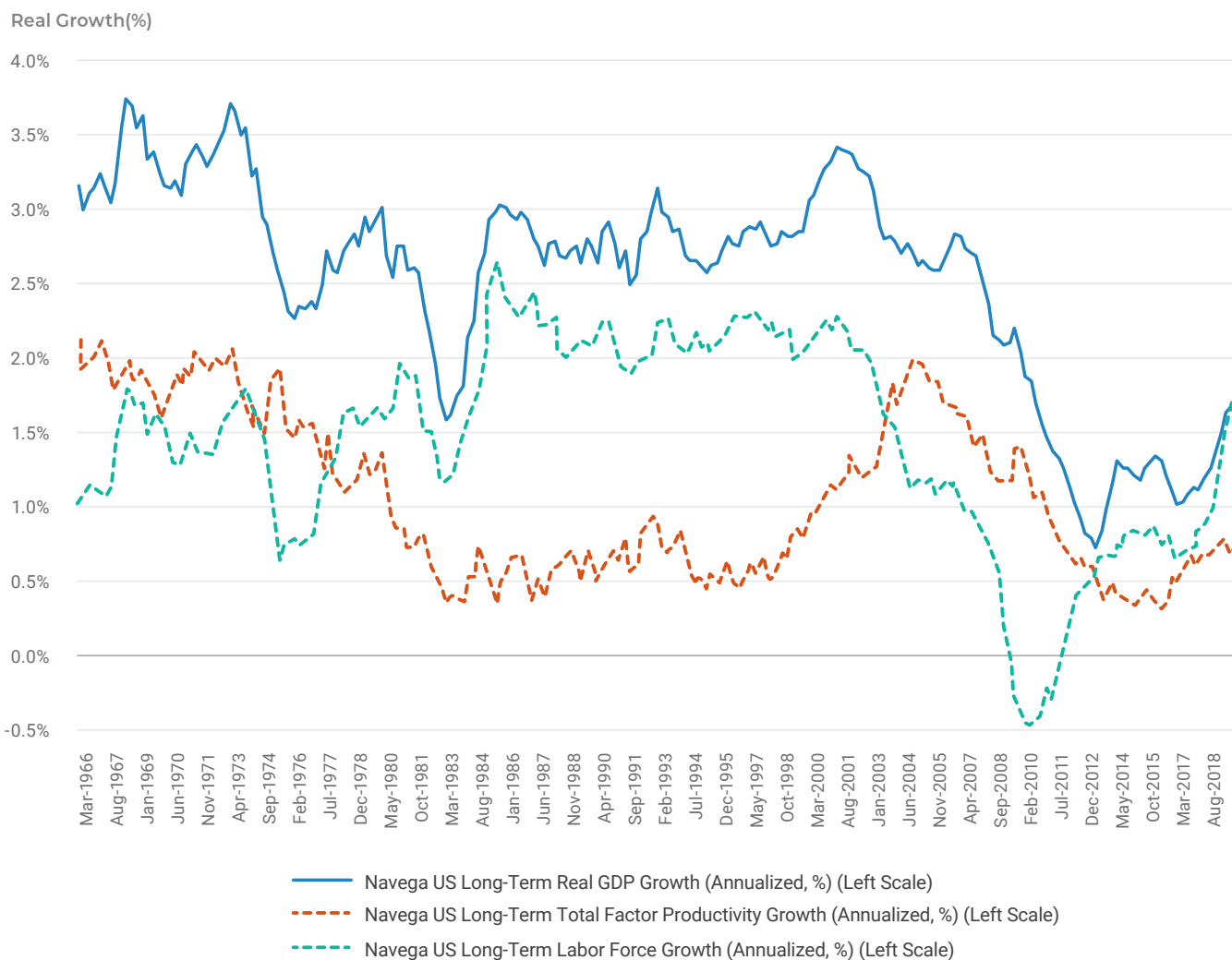


SOURCE: NAVEGA STRATEGIES LLC RESEARCH

The reason that the bond market and our model indicate a prolonged period of low real growth is because the drivers of long-term real growth themselves are below their long-term trends. Long-term real growth is driven by the growth in labor (as measured by hours worked) and the growth in total factor productivity.

Indeed, a prior for long-term real growth can be easily derived from these two factors. Exhibit 4 shows the Navega prior for long-term growth and the two main constituents. As the exhibit makes clear, growth in TFP and hours worked remain below their long-term trends.

Exhibit 4 - Low Long-Term Real Growth, Driven by Low Growth in TFP and the Labor Force



SOURCE: NAVEGA STRATEGIES LLC RESEARCH

Lessons for bond investors

The big reason all of this matters is because a prolonged period of low real growth is also likely to lead to a prolonged period of low (relative to history) real yields. For bond investors, our advice would be the fol-

lowing: first, pay close attention to the drivers of long-term real growth. Second, understand the effects of long-term growth on your portfolio. Third, don't get over-ly stressed about short term recession prospects.

Navega Strategies LLC.
www.navegastrategies.com

New York, USA
info@navegastrategies.com



Copyright (c) Navega Strategies, LLC.
All rights reserved.



Disclaimer

This document is for informational purposes only. [This document is confidential, is intended exclusively for the person to whom it has been delivered, and may not be reproduced or redistributed to any other person without the prior written consent of Navega Strategies LLC ("Navega").] Navega does not intend to provide investment advice through this document. This document is in no way an offer to sell or a solicitation of an offer to buy any securities. Investing in securities involves risk of loss, including a loss of principal, that clients should be prepared to bear. Past performance is not indicative of future results, which may vary materially. While this summary highlights important data, it does not purport to capture all dimensions of risk. The methodology used to aggregate and analyze data may be adjusted periodically. The results of previous analyses may differ as a result of those adjustments. Navega has made assumptions that it deems reasonable and used the best information available in producing any calculations herein. Forward-looking statements reflect our judgment as of the date of this document and are based upon assumptions which may differ materially from actual events.

All information provided herein is as of the date set forth on [the cover page] (unless otherwise specified) and is subject to modification, change or supplement in the sole discretion of Navega without notice to you. This information is neither complete nor exact and is provided solely as reference material with respect to the services offered by Navega. Information throughout this document, whether stock quotes, charts, articles, or any other statement or statements regarding market or other financial information, is obtained from sources which we [and our suppliers] believe reliable, but we do not warrant or guarantee the timeliness or accuracy of this information.

The material presented herein has been prepared by Navega based on Navega's own financial research, available estimates, and judgment. This information discusses general market activity, industry or sector trends, or other broad-based economic, market or political conditions. It is provided for illustrative purposes only, and should not be construed as investment advice or an offer to buy or sell any security. All modeling, calculations, forecasts, projections, evaluations, analyses, simulations, or other forward-looking information contained herein is based on various assumptions concerning future events and circumstances, including Navega's internal estimates, all of which are uncertain and subject to change without notice. Actual results and events may differ materially from the projections or estimated presented. In addition, as noted, much of our research is based on information regarding an illustrative private equity (buyout) fund. The selection of such illustrative fund was based on aggregate allocations to private equity buyout funds and does not reflect the characteristics of any specific private equity fund. Such analysis involves assumptions which may not prove to be true in all circumstances. Similarly, while we believe the illustrative fund selected is a reasonable data point for our research, there is no guarantee that the illustrative fund is representative of any specific private equity fund.

This information speaks only as of the date referenced with respect to such data and may have changed since such date, which changes may be material. Navega has no obligation to provide any updates or changes. Navega does not purport that the materials or data included therein are comprehensive, and, while they are believed to be accurate, this information is not guaranteed to be free from error, omission or misstatement.